

DIRECTIONS

From I-95, heading North to Richmond:

I-95 north to Richmond
Take exit 67B to merge onto Chippenham Pkwy/VA-150 north
Take the Midlothian Tnpk/US-60 west exit toward Midlothian
Turn left at Ruthers Rd

From I-95, heading South to Richmond:

I-95 south to Richmond
Take exit 79 to merge onto I-95 south toward Powhite Pkwy
Continue on VA-76 South (signs for Powhite Pkwy/VA-150)
Take the Midlothian Tnpk/US-60 east exit
Turn right at Ruthers Rd

From I-64, heading West to Richmond:

I-64 west to Richmond
Take exit 190 on the left for I-95 south/5th St toward Coliseum/Downtown
Keep left at the fork, follow signs for I-95 south and merge onto I-95 south
Take exit 74A for Downtown Expy/VA-195
Merge left onto Powhite Pkwy/VA-76 south
Take the Midlothian Tnpk/US-60 east exit
Turn right at Ruthers Rd

From I-64, heading East to Richmond

I-64 east to Richmond
Take exit 175 to merge onto VA-288 south toward Chesterfield
Take the exit toward Richmond/Powhite Pkwy/VA-76
Merge onto Powhite Pkwy/VA-76 north
Take the Midlothian Tnpk/US-60 east exit
Turn right at Ruthers Rd

From Richmond International Airport:

Head south on South Airport Dr
Turn right at Charles City Rd
Turn left at South Laburnum Ave
Take the ramp to Pocahontas Pkwy/VA-895
Continue on Chippenham Pkwy/VA-150 north Take the Midlothian Tnpk/US-60 west exit toward Midlothian
Turn left at Ruthers Rd

ANDERSON

MACHINE MANUFACTURING

Anderson Machine Manufacturing Company, Inc. is a Virginia corporation located near historic Richmond, Virginia. We are a turn-key custom machine manufacturing company serving our customers since 1974. Anderson Machine employees routinely handle machine projects from concept to completion. Our customers' design and engineering needs are met by our in-house Engineering Department. In addition, numerous beneficial services are offered by our Commercialization and Technical Support Department. Our designs are realized in our Manufacturing and Assembly Departments which provide the finest parts and machinery services available in the area.

All our services are offered at one convenient location.

214 Ruthers Road
Richmond, VA 23235

Phone: 804-272-5548
Fax: 804-320-0809

E-mail: info@andersonmachine.com
www.andersonmachine.com

ANDERSON
MACHINE MANUFACTURING

A TURN-KEY CUSTOM MACHINE MANUFACTURING COMPANY

ANDERSON SERVICES

MANUFACTURING

Our manufacturing facility offers a full range of industrial manufacturing and fabrication services. We specialize in low volumes, yet are capable of moderate production runs.



4-Axis Machining

Our highly skilled machinists use a full complement of modern CNC machinery to produce everything from outstanding high tolerance parts (for example, those used on military aircraft)

to simple mounting brackets. Parts manufacture is accomplished in our climate-controlled plant. The accuracy of each part is ensured by our Quality Control Department and can be verified on our advanced coordinate measuring inspection system. For supply chain optimization, we offer the option of stocking and managing your renewal/replacement parts at our facility. Ask for details. We can also show you how to design and build more wear into your replacement parts. Your business will benefit from enhanced machine reliability and extended machine life. For more details check our website.

ASSEMBLY

Our Assembly Department employees combine a diverse mix of education and know-how with years of practical experience building and repairing machinery. Our experienced Assembly Department technicians can build your one-off prototype or mass-produce your industrial equipment. In addition, they are available to install parts or perform equipment repairs at your facility. For more information check our website.

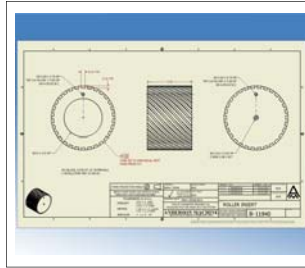
*Often existing parts can be reused in assemblies. These parts are first checked for damage or wear, then renewed or repaired in our machine shop to original specifications when possible.



Equipment Rebuilding

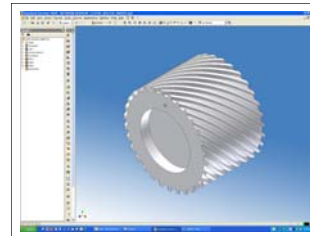
ENGINEERING

Our Engineering Department uses progressive thinking and the latest technology to provide innovation for your business. The Engineering Department at Anderson Machine was created in 1985. Since its inception we have employed the best engineering and design personnel in the custom machine manufacturing industry.



2D CAD Detail Prints

The in-house Engineering staff at Anderson Machine includes degreed mechanical and electrical engineers as well as very experienced machinery designers. In addition to its on-site group, Anderson Machine can provide contract engineering employees at customer sites. For greater project coverage, Anderson Machine also maintains a network of associates who provide contract consulting services not separately offered in-house. Let us show you how old, mechanically driven equipment can be up-



3D CAD Designing

graded through the use of modern machine controls and multi-axis coordinated motion control. New and old equipment will benefit from using cutting-edge controls and motion products from such manufacturers as Allen-Bradley, Siemens, Yaskawa, and Omron. For more details check our website.



Electrical Panel Design

COMMERCIALIZATION & TECHNICAL SUPPORT

Our Commercialization Department focuses on expanding your product's ability to achieve success. We can provide everything you need to incorporate machinery into your plant with the fewest headaches. Is your prototype design ready for mass production? Anderson Machine can provide commercialization and technical support for equipment designed in-house or by our customers. For more information check our website.



Custom Machinery Designed for Your Application